

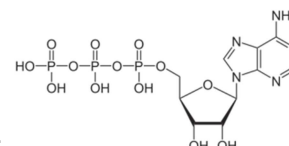
# ATPURE®

## ADENOSINE TRIPHOSPHATE DISODIUM

Formula:  $C_{10}H_{16}O_{13}N_5Na_2P_3$

Molecular weight: 507.18 g/mol

Structural formula:



### SYNONYMS

CAS-No.: 987-65-5

IUPAC: [[[(2R,3S,4R,5R)-5-(6-aminopurin-9-yl)-3,4-dihydroxyoxolan-2-yl]methoxy-hydroxyphosphoryl]phosphono hydrogen phosphate

EINEC Number: 213-579-1

### APPLICATIONS

**ATPURE®** transports energy within cells for metabolism improving the athletic performance during work outs.

**ATPURE®** is used with a maximum 400 mg daily dosage in applications like:

- ◆ Sports Supplements

### SPECIFICATIONS

Appearance: Crystalline powder

Color: White to off white

Assay: min. 95.0 %

Heavy metals (as Pb): max. 10 mg/kg

Water: 6.0 – 12.0 %

Chlorides: N.M.T. 0,05 %

Iron: N.M.T. 0,001 %

Endotoxin: N.M.T. 2.0 EU/mg

### TYPICAL PROPERTIES

Stability: min. 2 years

Melting point: approx. 187°C

Solubility: Colorless

### HANDLING

Packaging: tins of 1 kg, 5 kg and 10 kg

Transport: not restricted

#### For further information see MSDS

The information contained herein is believed to be correct and corresponds to the latest state of knowledge. However, no warranty is made.  
Released: 19.10.2016